



Intelligent **Safety** Solutions

Content

- Scaffolding Collapse - Pair Fined £13,000
- Woman Trapped Under Forklift Dies
- COSHH Negligence
- Companies failed deceased worker
- HSE Welcomes Löfstedt Review
- Manufacturer In Court Over Crushed Hand
- Wiveliscombe Trench Tragedy
- Safety Download
- MBA News
- **Training Calendar**

Scaffolding Collapse - Pair Fined £13,000

Partners in a company that erected unsafe scaffolding, which crashed to the ground in strong winds, were recently sentenced. Terrence Foster, of Scaffolding Systems South West, was fined £8,000 and his partner in the business, Shaun Greenslade, was fined £5,000. Both were ordered to pay costs of £2,040 each in the case brought by the Health and Safety Executive (HSE) at Exeter Magistrates.

A large section of scaffolding erected by the firm at a builders' merchants on 25 March, 2009 fell away from the building, seriously damaging a number of parked cars. The scaffolding had been erected to allow re-roofing to take place at the premises.

HSE inspectors told the court that netting had been fixed to the scaffolding but extended almost a metre and a half above the roof of the building. The netting was attached to the inside edge of the scaffold instead of the outside and acted as a sail to the prevailing wind causing the scaffolding to collapse.

The investigation also found there were inadequate stability measures on the scaffold to withstand foreseeable wind speeds, such as scaffolding ties.



Speaking after the hearing, HSE Inspector, Andrew Kingscott, said:

"The degree of risk and danger to workers and the public was considerable. The standard of the scaffold as installed fell far short of the appropriate level".

"This incident could easily have led to human tragedy and should act as a wake-up call to scaffolders to carry their work out to industry standards."

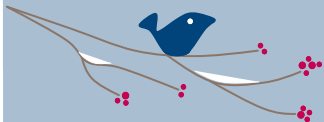
Shaun Greenslade, trading as Scaffolding Systems South West Ltd of Warwick Road, Heavitree, Exeter, pleaded guilty to breaching Regulation 28(2) of the Construction (Design and Management) Regulations 2007.

Terry Foster, also trading as Scaffolding Systems South West Ltd, pleaded guilty to a breach of the same regulation.

Wishing you a very

Merry Christmas

and a prosperous 2012
from all the team at
MBA Safety & Training Limited



MBA Safety & Training Limited
Unit 6, The Counting House, Tonedale Business Park,
Wellington, Somerset, TA21 0AW

E: info@mbasafety.co.uk
T: 01823 668 526
F: 01823 478 612

www.mbasafety.co.uk

Woman Trapped Under Forklift Dies

A woman has died in hospital after being trapped underneath a forklift truck at a cash and carry distribution centre in Bristol. A spokesman for Great Western Ambulance Service said the woman, who it said was a staff member at the store, had been trapped underneath the forklift. The woman, died later at Frenchay Hospital.

In a statement the spokesperson for the cash and carry said it was a "tragic accident".



A spokeswoman from Bristol City Council said: "We can confirm that Bristol City Council health and safety inspectors are investigating a fatal accident".

The investigation is still ongoing.

COSHH Negligence

A waitress at a hotel suffered burns to her eyes, face, and chest when an open bottle of oven cleaner splashed on her.

Gemma Taylor, 22, was working at Whitworth Hall Hotel in Spennymoor, County Durham, when the incident took place. The hotel was hosting a wedding and Ms Taylor was asked by the hotel's trainee manager to help find a roll of mop-up tissue.

She began searching for the roll inside an unlit storage cupboard, where a bottle of oven cleaner had been stored on a shelf three feet above the ground, without a lid and with the warning labels pointing away from her. When she moved the bottle the liquid splashed out on to her face and she suffered corneal abrasion on her eyes and burns to her face and chest. She was unable to return to work for two weeks and has subsequently made a full recovery.



The incident was investigated by Durham County Council, which found that although the

hotel had suitable systems in place for storing chemicals, they had not been properly monitored, or managed.

Whitworth Hall Country Park Ltd, which owns the hotel, appeared at Darlington Magistrates' Court and pleaded guilty to breaching s2(1) of the HSWA 1974 and reg.8 of the Workplace (Health, Safety and Welfare) Regulations 1992, for failing to adequately light the cupboard. It was fined a total of £8700 and £3229 in costs.

In mitigation, the company said it had adequate procedures in place and its staff should have followed them. It has subsequently put a light in the cupboard and installed signs to warn that dangerous chemicals are stored inside. The oven cleaner is now kept at the bottom of the cupboard and the company monitors who has access to the storage area.

The firm also said it had no previous convictions and entered an early guilty plea.

After the hearing, the council's head of environment, health and consumer protection, Joanne Waller, said: "This case should serve as a warning to other businesses that they need to take their responsibility for the health, safety and welfare of their staff seriously.

"It is not enough for employers to simply have risk assessments and procedures written down – they must also make sure their staff are aware of them and follow them properly."



Fact File

2,742 people died from asbestos-related cancer, mesothelioma, in the South West between 2000 and 2005. In 2008, a total of 223 people died of the disease in the region.

Our next Asbestos awareness course is running on 9 February 2012.

For further details please contact info@mbasafety.co.uk or call 01823 668 526

Companies failed deceased worker

Two construction companies have been prosecuted for health and safety failures that permitted the circumstances for a fatal accident to occur on 20th August 2006 during work on a dual carriageway section of the A5036 Princess Way in Seaforth, Liverpool.

A 61-year old employee of Amey Infrastructure Services Ltd (part of the Amey Mouchel joint venture with Mouchel Parkman Services Ltd) was replacing the lights on the central reservation when the mobile elevating work platform's arm he was using to access them collapsed, causing him to fall 8 metres. He struck the back of the vehicle and sustained injuries from which he died hours later.

Investigation found that Amey Infrastructure Services Ltd and Mouchel Parkman Services Ltd had failed to implement adequate systems for checking and maintaining the cherry picker type elevating platform, when it was first delivered or throughout the hire period. Furthermore, it needed to be repaired on several occasions while it was on hire to the companies, and had been subjected to heavy use in all weather conditions for almost a decade.



An HSE official explained that given the equipment's heavy usage and regular repair record, it demanded that inspection and maintenance procedures be carried out thoroughly because of the great risks involved in working at height.

At Liverpool Crown Court Amey Infrastructure Services Ltd of Oxford admitted breaching S.2(1) of the Health and Safety at Work etc Act 1974. It had failed to ensure the safety of its employees and was fined £30,000 plus £32,500 in prosecution costs.

Mouchel Parkman Services Ltd of Oxford pleaded guilty to breaching S.3(1) of the same act for failing to ensure the deceased's safety and was fined £30,000 with costs of £32,500.

HSE Welcomes Löfstedt Review

The Health and Safety Executive (HSE) has welcomed the publication of the Löfstedt review. Employment Minister Chris Grayling commissioned the independent review in March 2011 and appointed Professor Ragnar Löfstedt - Director of the King's Centre for Risk Management at King's College, London - to chair it.

Professor Löfstedt has made recommendations aimed at reducing the burden of unnecessary regulation on businesses while maintaining Britain's health and safety performance, which is among the best internationally. The Government has accepted his recommendations.

Judith Hackitt, the Chair of HSE, said:

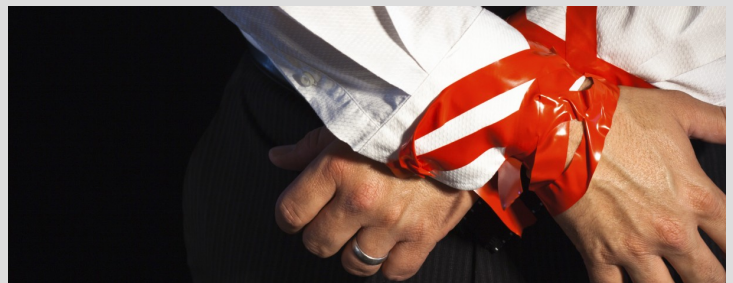
"Professor Löfstedt's insightful report will go a long way to refocusing health and safety in Great Britain on those things that matter - supporting those who want to do the right thing and reducing rates of work-related death, injury and ill health."

"We must have a system of health and safety which enables employers to make sensible and proportionate decisions about managing genuine workplace risks."

"Simplifying and streamlining the stock of regulations, focusing enforcement on higher risk businesses, clarifying requirements, and rebalancing the civil litigation system - these are all practical, positive steps."

"Poor regulation - that which adds unnecessary bureaucracy with no real benefits - drives out confidence in good regulation."

"We welcome these reforms because they are good for workers and employers but also for the significant contribution they will make to restoring the rightful reputation of real health and safety."



HSE said it would meet the timetable set by the Government for implementing those recommendations for which it was responsible.

Another Government regulatory reform initiative, the Red Tape Challenge, will report in the New Year on further possible changes to the stock of health and safety regulations.



Manufacturer In Court Over Crushed Hand

A manufacturing firm has been sentenced after a worker's hand was crushed in a metal press at a St Helens factory.

Barry Kelleher lost his little finger and part of the palm on his right hand as a result of the incident at Crane Building Services and Utilities. The 47-year-old from Leigh also needed two skin grafting operations.



The owner of the factory, Crane Ltd, was prosecuted by the Health and Safety Executive (HSE) after an investigation found the machine could still be operated when a workers' hand was underneath the mould.

Knowsley Magistrates' Court in Huyton was told the machine had been installed at the factory on Delta Road in St Helens in 1967, but had not been upgraded to comply with modern health and safety laws.

Mr Kelleher does not remember the incident which occurred while he was using the press to mould metal parts, used by the gas industry. However, the HSE investigation concluded that the most likely explanation is that he inadvertently pressed the foot pedal on the machine while his hand was under the mould.

Crane Ltd pleaded guilty to a breach of the Provision and Use of Work Equipment Regulations 1998 by failing to prevent workers from being able to access the dangerous parts of the machine while it was operating. The company, of West Road in Ipswich, was fined £10,000 and ordered to pay £4,560 in prosecution costs on 9 December 2011.

Barry Kelleher was off work for seven weeks as a result of his injuries, before returning to work initially for one day a week. He said:

"While I was off work, I struggled with many day to day activities and this was very depressing. I felt I would never get back to

normal. My attitude to the injury is the same as my attitude to life in general, and that is to be positive and get on with it."

"But it's been difficult and I continue to have some very low moments. The loss of the small finger and the damage to the side of my hand stopped me doing several things. I continue to deal with the effects of what happened on a daily basis."

Speaking after the hearing, HSE Inspector Sarah Wadham added:

"It's vital that manufacturers using older machines keep them up to date with modern health and safety standards to protect their workers. Crane Ltd should have made sure adequate guarding was in place on its presses to prevent workers being put at risk. It simply shouldn't have been possible for an employee to start a machine while his hand was still under the mould. As a result, Barry Kelleher has suffered a life-long injury to his right hand, including the loss of his little finger. Manufacturing firms need to act now to prevent incidents like this happening again in the future."

Wiveliscombe Trench Tragedy

A Wiveliscombe man was found dead after the trench he was working on collapsed. He was digging a deep trench at a Farm, near Clatworthy. He was using a mechanical digger to lay some pipe in the three-metre deep trench.

A coroner's spokesman said police believed that the man entered the trench, against advice, before the sides caved in on him, causing him to die of asphyxiation.



Emergency services were called to the scene at around 4.05pm, but his body was left over night due to fears over the safety and stability of the trench. His body was recovered at 6.30pm the following day with the help of a specialist construction team.

A post mortem was carried out and the Health & Safety Executive is investigating.

The man leaves behind a wife, two sons and a daughter.

Safety Download

Free useful downloads.

Winter Driving Tips

RoSPA have issued a road safety information sheet which can be downloaded from their website.

It covers how to prepare your vehicle, what to have in your winter emergency kit, preparing your journey and yourself, tips for driving in ice and snow etc.



<http://www.rospace.com/roadsafety/info/winter-driving-tips.pdf>

Leptospirosis: Are you at risk?

The HSE have launched a pocket card that explains what leptospirosis is, how you might catch it and ways to prevent it. It also explains what you should do if you do contract the disease.



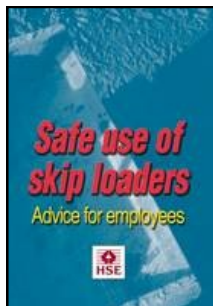
It is available for purchase or alternatively this card is available to download on the HSE website:

<http://www.hse.gov.uk/pubns/indg84.pdf>

Safe use of skip loaders

This leaflet identifies the safety precautions that can be used when loading skips.

It covers the safe use of skip loaders and provides a brief checklist of some important things you can do to protect yourself and others.



<http://www.hse.gov.uk/pubns/indg378.pdf>

MBA News

Twitter

We are now on Twitter, please follow us: @MBA_Safety

Course Prices

We are freezing our prices for 2012, both our open courses and our in-house courses.

Commando Challenge

We have entered a team into the Royal Marines Commando Challenge 2012. Paul, Sarah, Tim and Jennifer will be taking part in the 4k challenge to raise money for Devon Air Ambulance, Royal Marines Charitable Trust Fund and C Group (supporting the Royal Marines).

The challenge involves completing the 4 kilometre Royal Marines assault course in which you encounter the very muddy bog, wade through Peters Pool, crawl through the crocodile pit and get submerged in the sheep dip amongst other challenges.

For more information about the challenge and the charities it is supporting, see the website: www.commandochallenge.co.uk

Please sponsor Team MBA on our Just Giving page: www.justgiving.com/teams/mba

Festive Fun



Open Courses Training Calendar

ConstructionSkills SMSTS (5 days)

- 23, 24, 25, 26 & 27 January 2012

ConstructionSkills SMSTS Refresher (2 days)

- 2 & 3 February 2012

ConstructionSkills SSSTS (2 days)

- 31 January & 1 February 2012

ConstructionSkills Health & Safety Awareness (1 day)

- 20 January 2012

IOSH Managing Safely (4 days)

- 2, 3, 4 & 5 April 2012

IOSH SSE (1 day)

- 13 February 2012

HSE Approved First Aid At Work (3 days)

- 23, 24 & 25 April 2012

HSE Approved First Aid At Work - Requalification (2 days)

- 1 & 2 March 2012

HSE Approved Emergency First Aid (1 day)

- 30 January 2012

Scaffold Inspection (1 day)

- 17 January 2012

Risk Assessment & Method Statements (1 day)

- 10 February 2012

Manual Handling (½ day)

- 19 January 2012 (pm)

Work at Height (½ day)

- 19 January 2012 (am)

Asbestos Awareness (½ day)

- 3 February 2012

Our full training schedule is available on our website,
www.mbasafety.co.uk



For details on these or any other health and safety courses please contact info@mbasafety.co.uk or call 01823 668 526

Open and In Company Courses

Accredited / Approved Courses

- IOSH Safety for Senior Executives (1 day)
- IOSH Managing Safely (4 days)
- IOSH Managing Safely Refresher (2 days)
- ConstructionSkills Site Management Safety Training Scheme - SMSTS (5 days)
- ConstructionSkills SMSTS Refresher (2 days)
- ConstructionSkills Site Supervisor's Safety Training Scheme – SSSTS (2 days)
- ConstructionSkills Health & Safety Awareness (1 day)
- HSE First Aid At Work (3 days)
- HSE First Aid At Work Renewal (2 days)
- HSE Emergency First Aid At Work (1 day)

Half day courses*

- Legionella Awareness
- Asbestos Awareness
- Abrasive Wheels
- Manual Handling
- Work at Height (basic course)
- Office Safety (basic course)

1 day courses*

- Intervention & Restraint
- Asbestos Awareness (full course)
- Practical Risk Assessment
- Scaffold Inspection
- Fire Warden's Safety
- First Aid Appointed Persons
- Construction Design & Management Regulations
- Work at Height (full course)
- Office Safety (full course)
- General Health and Safety
- Health and Safety Awareness – Construction
- Safety for Senior Executives

2 day courses*

- Supervising Safely
- Health & Safety in Education

**All of these courses can be adapted to your specific requirements*

